



## Revised - INTERIM PROTOCOL ON DISPENSING OF ADRENALINE AUTO-INJECTORS, 150microgram applying from 5 November 2018 until further notification

*This validation protocol has been developed to ensure consistent practice nationally and to prevent the need for any local re-interpretation.*

You will be aware of the recent DHSC Supply Disruption Alert on EpiPen® and EpiPen Junior® adrenaline auto-injectors (AAs) that advises conserving supplies for patients who truly need them. Previous guidance implemented controls on the supply of 150microgram adrenaline auto injectors. Children weighing 25kg or less with the greatest short term need must still have access to these first, but stock positions are now sufficient to ensure that every patient has at least **two** 150microgram adrenaline auto injectors that are either **in date or have a formally extended expiry date** (see listed batches at link below). This can only be achieved by continuing prescription validation before the issue of new devices. Consequently, all prescriptions (private and NHS) must still be validated prior to supply to the community pharmacy or dispensing doctor practice, for a named patient from the wholesaler, by utilising the revised flow chart below.

The pharmacist or dispensing doctor practice must clearly explain the above situation to the patient/ parent/ carer and address any questions they may have. A letter for parents was issued on 15 October 2018 and was also attached to a CAS Alert you will have received on the same day.

The pharmacist, or dispensing doctor practice, must follow the flow chart prior to supply of 150microgram adrenaline auto injectors other than when there is an immediate clinical need. All patients need to have access to a minimum of two 150microgram adrenaline auto injectors. Due to further supplies being received this validation protocol has been revised to allow for each patient to have two AA's that are either **in date or have a formally extended expiry date** (see listed batches at link below). If the prescription is for more than two devices the patient should be advised to obtain a new prescription for the additional device(s) when supply eases or they use a device.

It is important to note when validating the expiry date of 150microgram adrenaline auto injectors, the product expires on the **last** day of the month indicated eg a device with an expiry date of 'November 2018' does not expire until the **END** of November 2018. For certain listed batches, the expiry date has been formally extended (see listed batches at link below). For the purposes of this protocol pens should only be replaced when the expiry date (or formally extended expiry date) is imminent (within two weeks of expiry or in line with extended expiry batches - see listed batches at <http://www.epipen.co.uk/> and <https://jext.co.uk/>) except in exceptional circumstances.

**If a supply is made:**

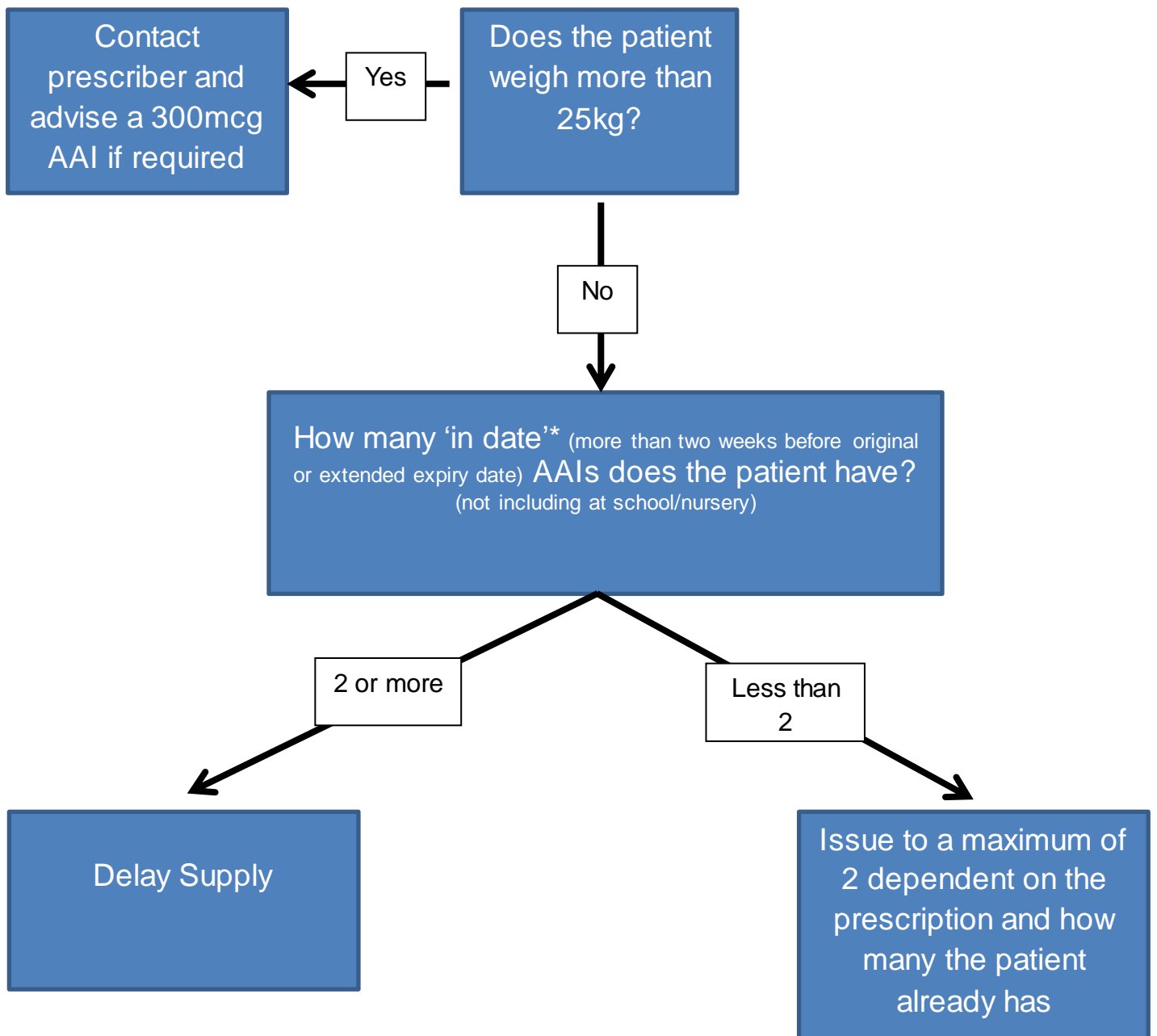
Check if the patient/ carer/ parent who will be using the 150microgram adrenaline auto injectors has used the issued brand of 150microgram adrenaline auto-injector before? If not see links below for training information:

- Emerade 150 Training Video: <https://www.medicines.org.uk/emc/product/5278/rmms>
- Jext 150 Training Video: <https://www.medicines.org.uk/emc/product/5747/rmms>
- EpiPen Junior Training Video: <https://www.medicines.org.uk/emc/product/4290/rmms>

**If a supply is not made:**

Explain to the patient/ carer/ parent that the prescription will be dispensed at a later date when a supply is available. Explain that if the situation changes and they use one of their pens to return to the pharmacy for supply. The pharmacists or dispensing doctor practice should speak to/contact the prescriber if there is any uncertainty about the best course of action for the patient and to assess any risks to the patient.

We currently have a limited supply and are working to resolve the EpiPen® and EpiPen Junior® shortage as fast as possible; this advice is interim, will be reviewed and relaxed whenever possible, but remains in force until further notice.



\*NB the product expires on the last day of the month indicated eg a device with an expiry date of 'November 2018' does not expire until the **END** of November 2018.

Some batches have a formally extended expiry date (see listed batches at <http://www.epipen.co.uk/> and <https://jext.co.uk/>).